

SPECIAL FEATURES

Capable of Air or CO₂ inlet pressures up to **100 PSI (6.9 bar)**.

Robust Design with durable integral mounting.

Patented Shuttle Valve, eliminates stalling.

Capable of passing solids up to 1/8" (3.2 mm) diameter easily with large **clog-free** Check Valves.

Corrosion Resistant materials capable of handling a wide range of chemicals.

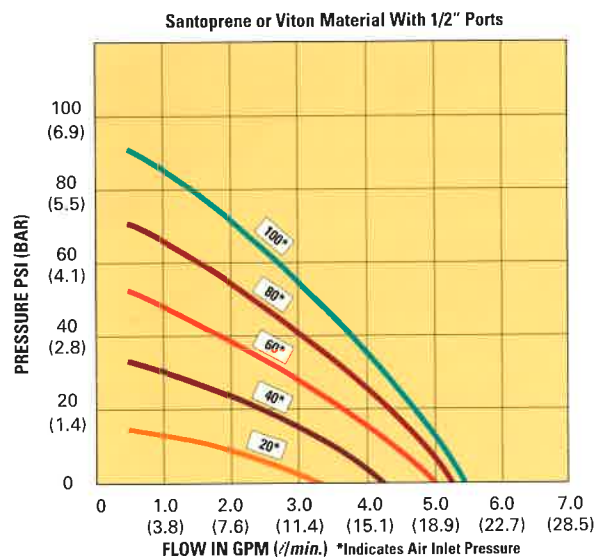
Sanitary design with insert molded diaphragm (Santoprene only).

Leak Resistant radial seals, no critical o-ring seals.

Quiet Operation with large exhaust muffler.

Ease of Installation with all quick disconnect ports.

PUMP PERFORMANCE



APPLICATIONS

- Automotive Cleaning and Recycling
- Chemical Transfer and Dispensing
- Bag-In-Box Chemicals
- Parts Washers
- Car Wash Systems

INSTALLATION RECOMMENDATIONS

- All port fittings are quick disconnect.
- Fluid inlet and discharge available in 90° configuration. 3/4" must use 90° elbows when using large muffler.
- Rubber grommets are provided for secure snug fit on mounting.
- All four mounting holes should be used with air inlet pressures exceeding 80 PSI (5.5 bar).

SPECIFICATIONS

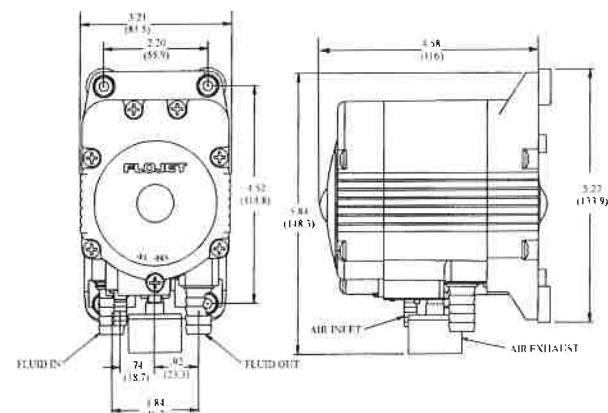
Pump Design	Duplex Diaphragm
Flow Rate	Up to 5 GPM (18.9 l/min.)
Gas Supply Pressure	20 to 100 PSI (1.4 to 6.9 bar)
Liquid Temperature	120°F (48.9°C) Nominal
Self Priming	Up to 15 ft. (4.5 m)
Ports	Gas Inlet & Outlet 1/4" (6.3 mm) Product Inlet 1/2" (12.7 mm) or 3/4" (19.1 mm) Product Outlet 1/2" (12.7 mm) or 3/4" (19.1 mm)

Wetted Parts:

Body and Check Valves	Polypropylene
Diaphragm	Santoprene® or Viton®
Check Valve Seats	Santoprene® or Viton®
Springs	Hasteloy
Net Weight	1.2 pounds (0.54 kg)

® A Registered trademark of Monsanto Co.
® A Registered trademark of I.E. DuPont Co.

DIMENSIONS inches (mm)



Flojet



ITT Industries
Engineered for life

www.flojet.com e-mail: sales@flojet.com

For further information, contact your FLOJET representative, or write to:

FLOJET

20 Icon • Foothill Ranch, CA 92610
Tel: 1-949-859-4945
1-800-2 FLOJET
Fax: 1-949-859-1153

ISO 9001 Certified

FLOJET (EUROPE) LTD.

Unit 1, Avant Business Centre
Denbigh West Industrial Estate
Milton Keynes, Bucks, England MK1 1DL
Tel: 44-1908-370088 • Fax: 44-1908-373731

F100-173 Rev 3/03-5M